

Echocardiography in Congenital Heart Disease

Some important differences from adult echocardiography that we need to bear in mind.

A/Prof. Le Minh Khoi. MD

Head, Echocardiography Laboratory

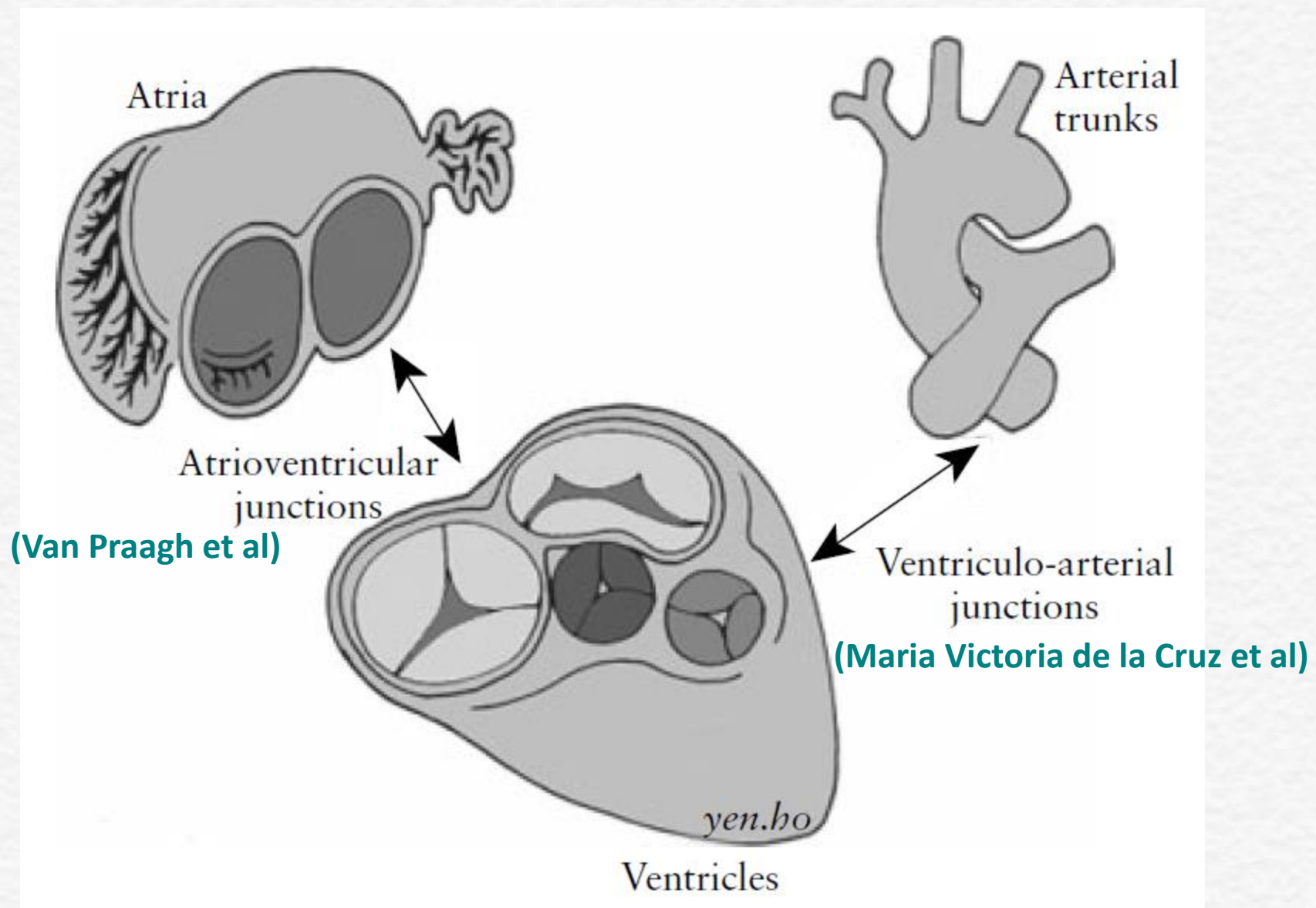
Cardiovascular Center

University Medical Center, HCMC

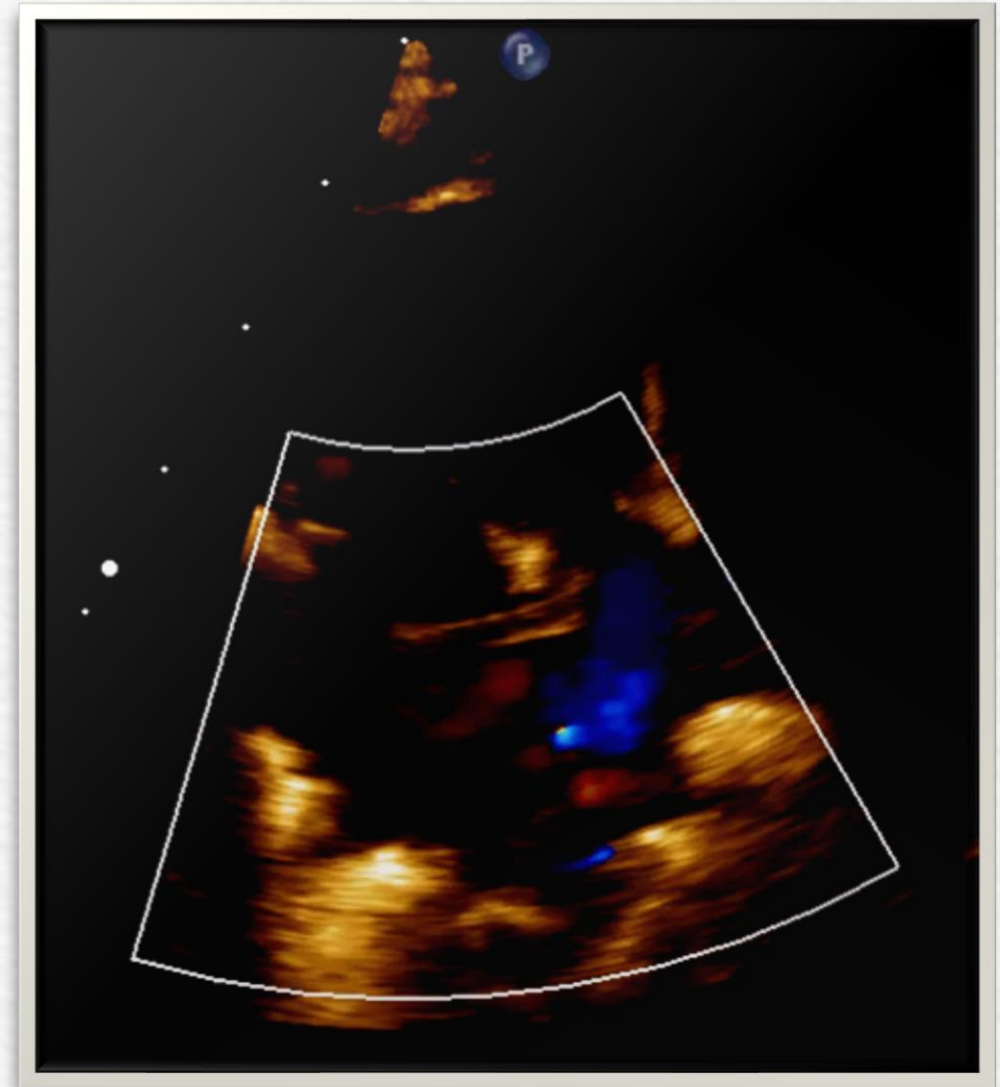
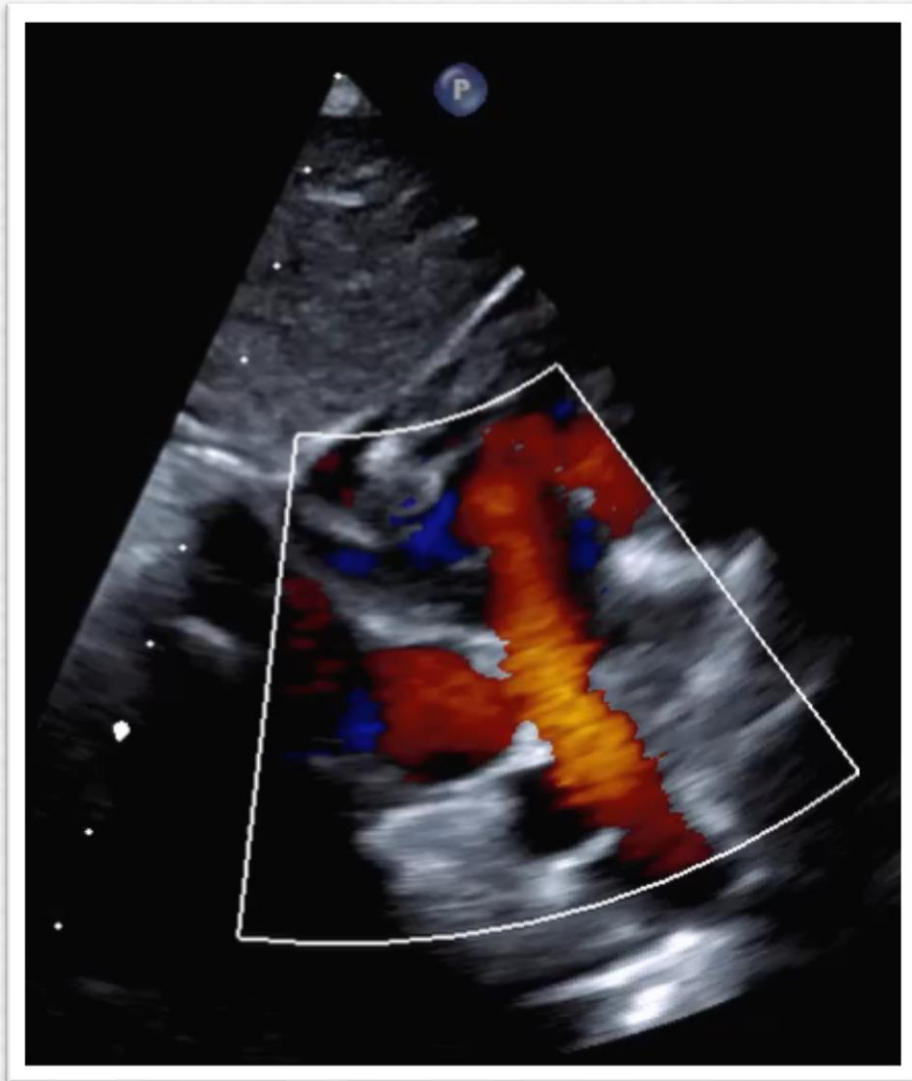
I. Systemic Sequential Approach

- 1. Veno-Atrial Connection**
- 2. Atrio-Ventricular Connnection**
- 3. Ventriculo-Arterial Connection**

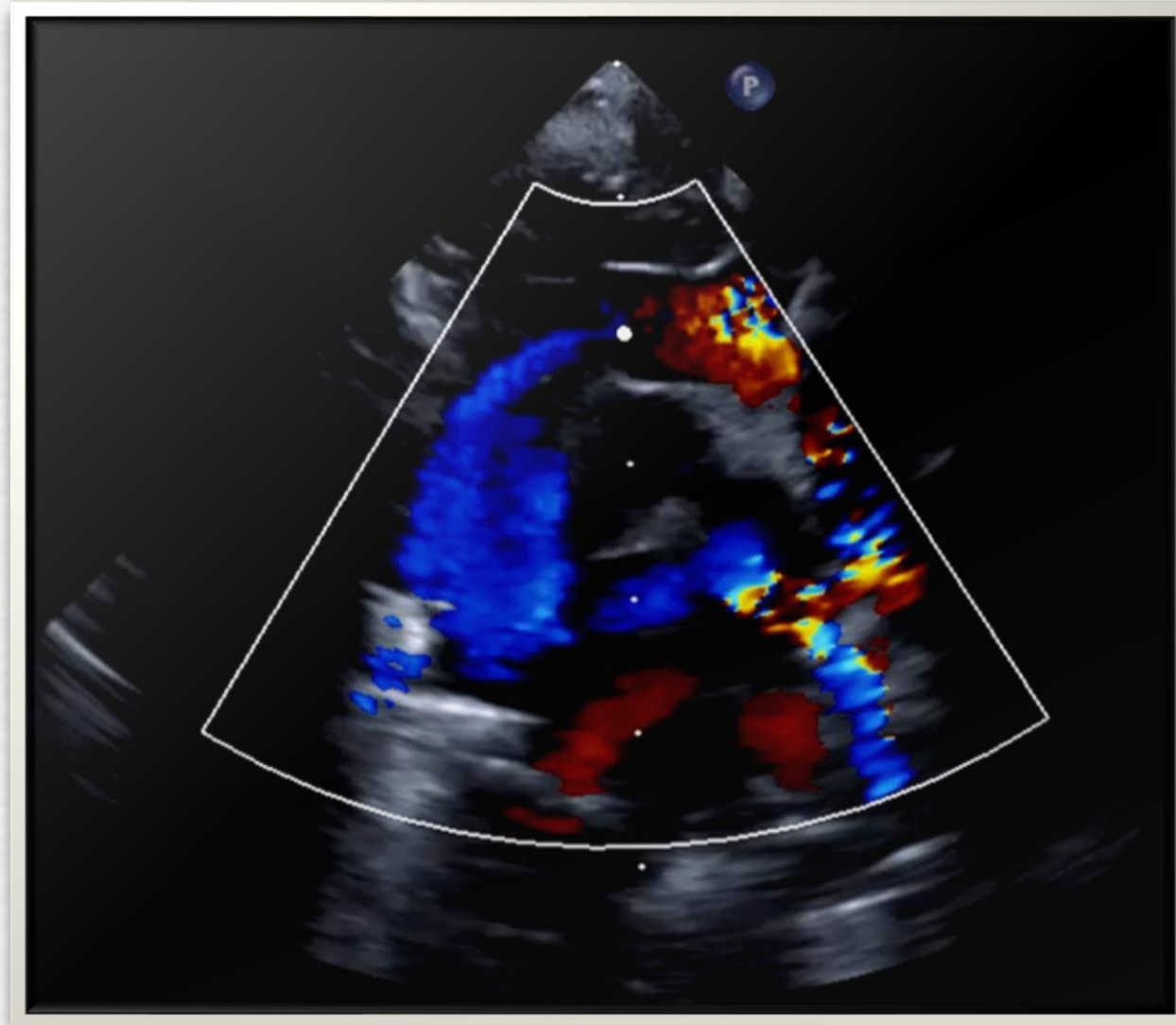
Essence: Three Building Blocks



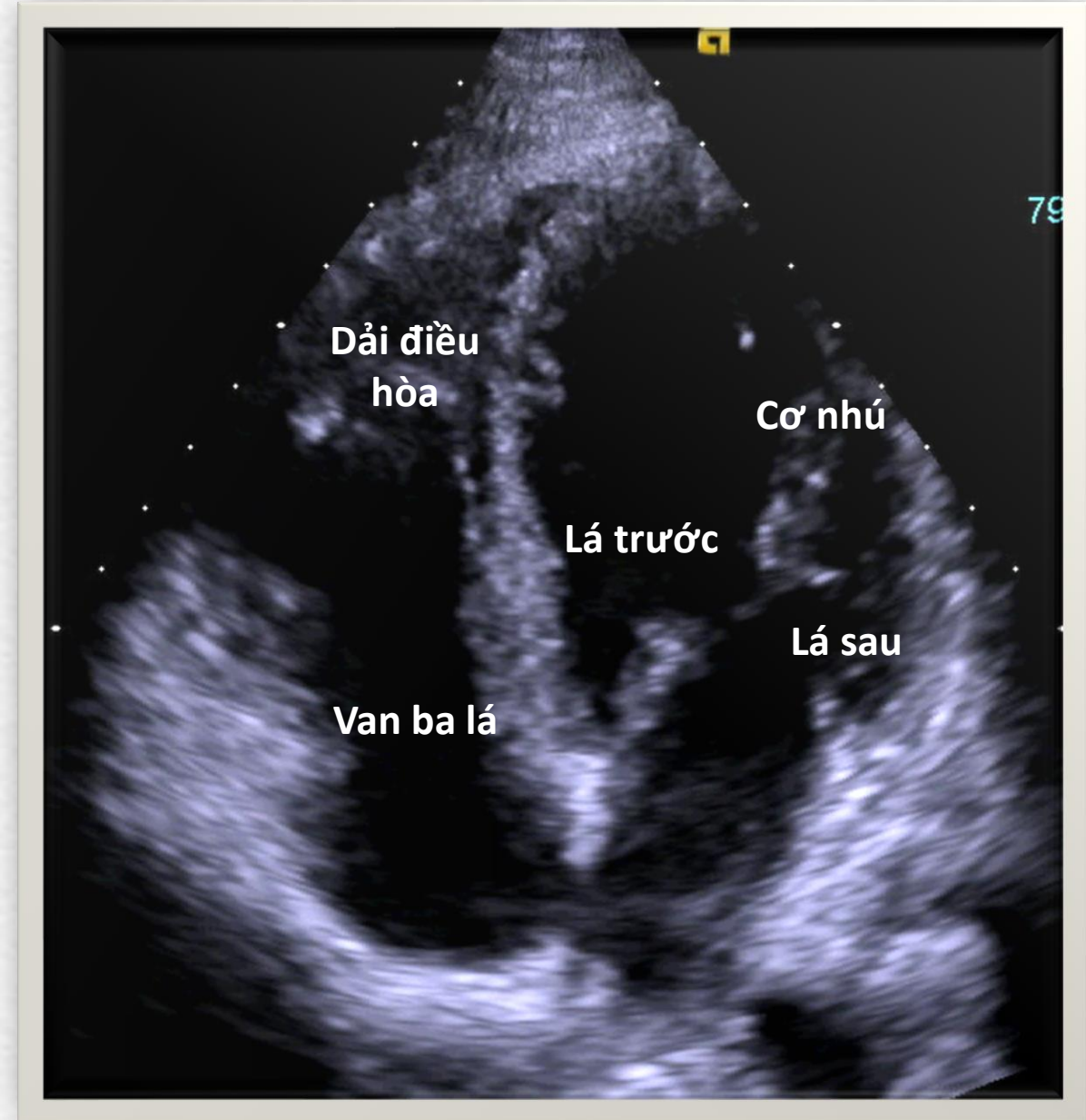
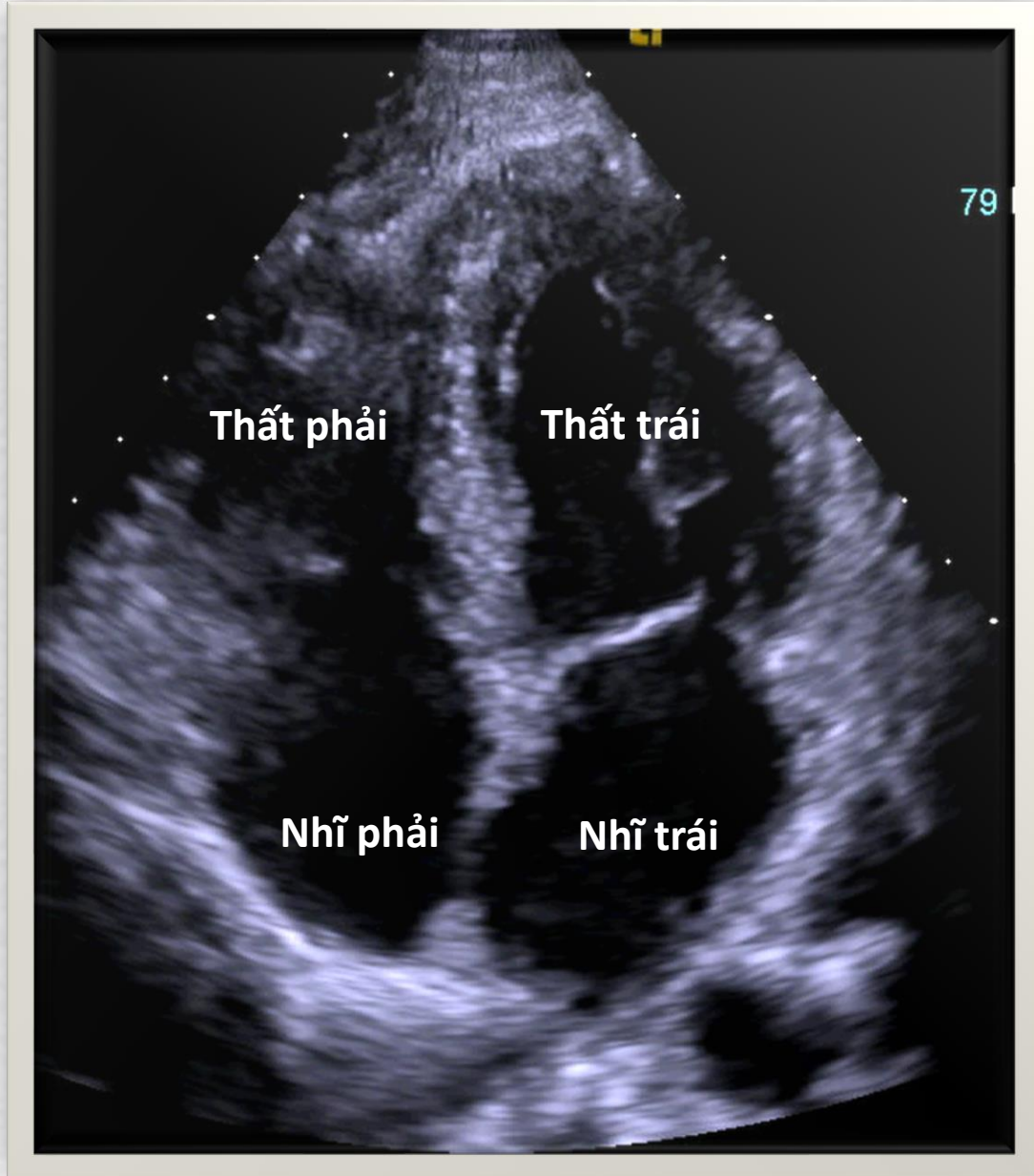
1. Veno-atrial Connection



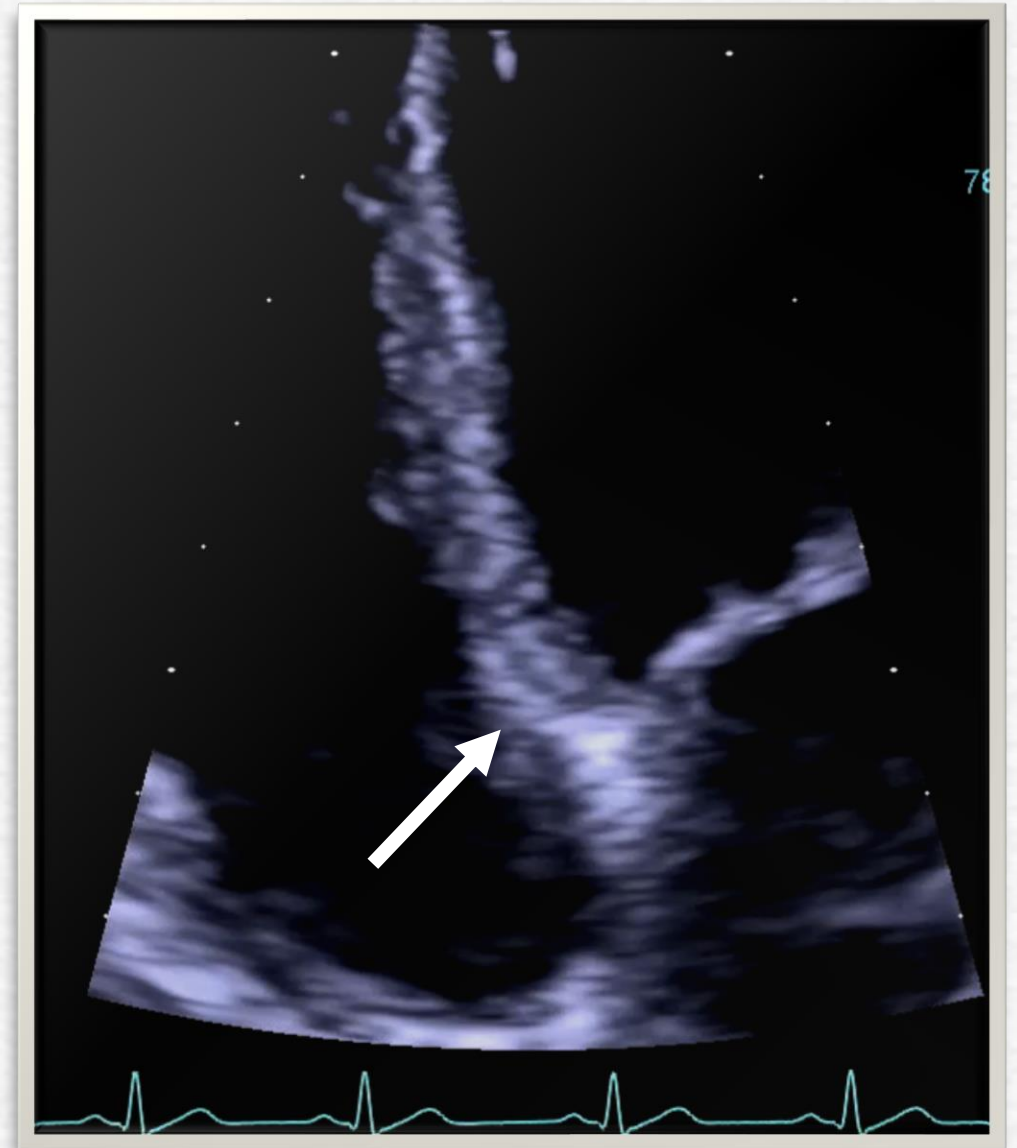
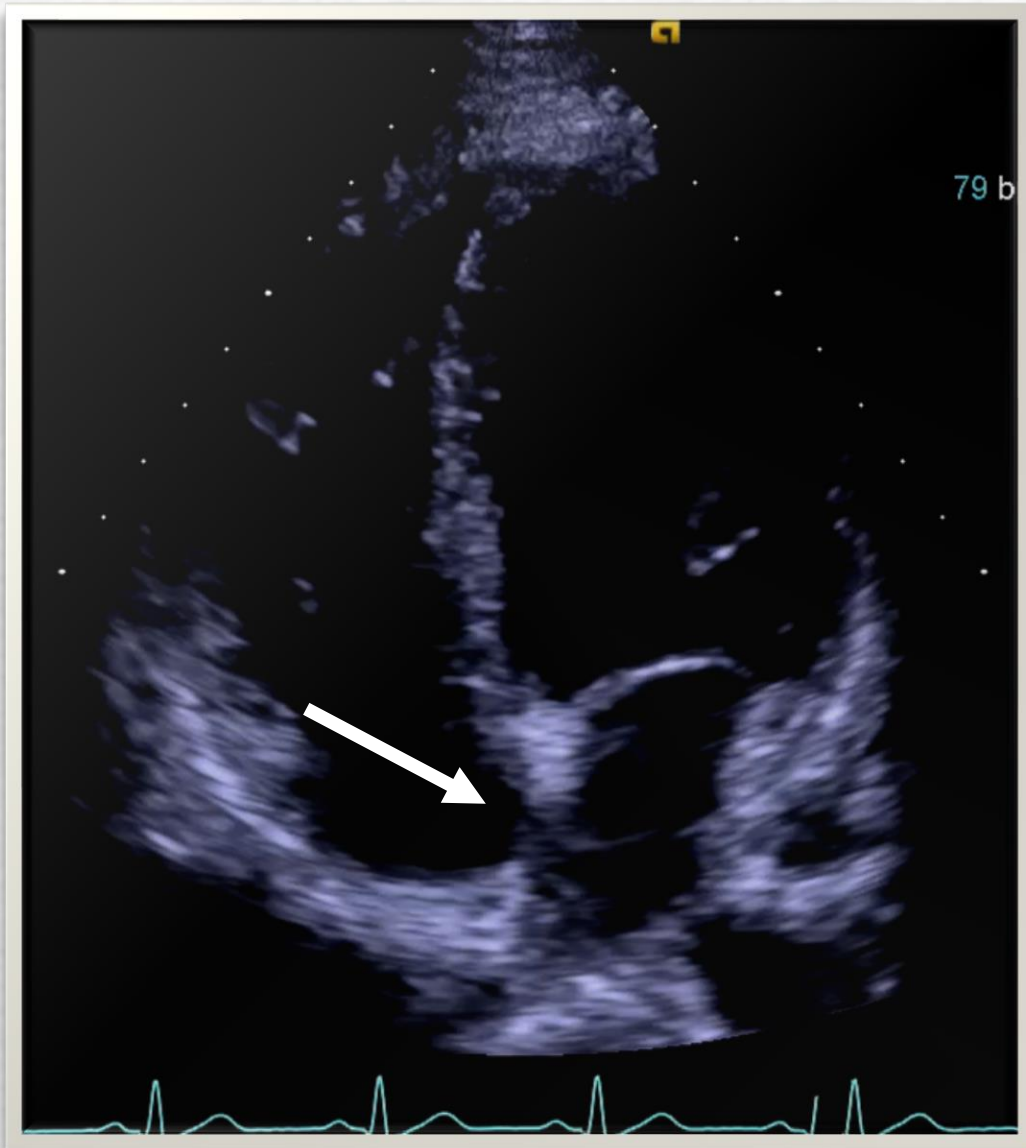
1. Veno-atrial Connection



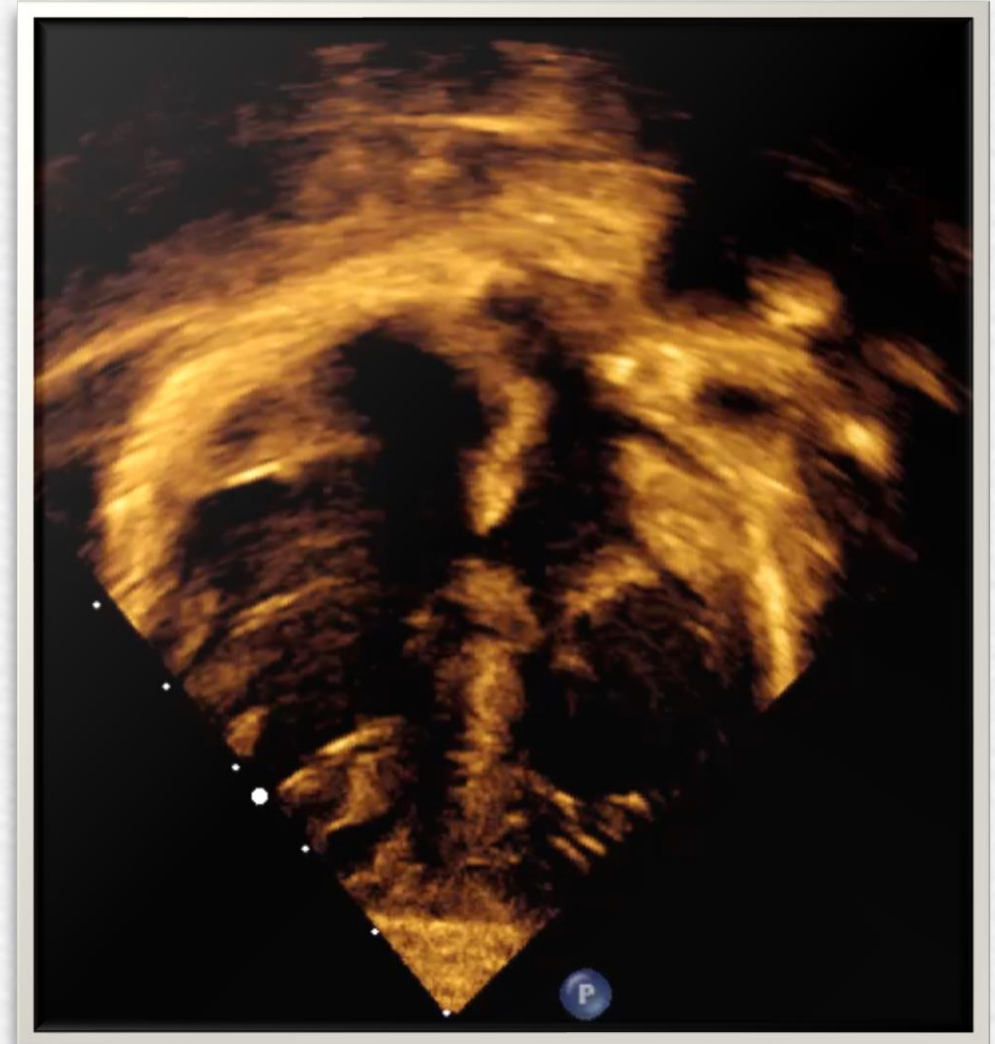
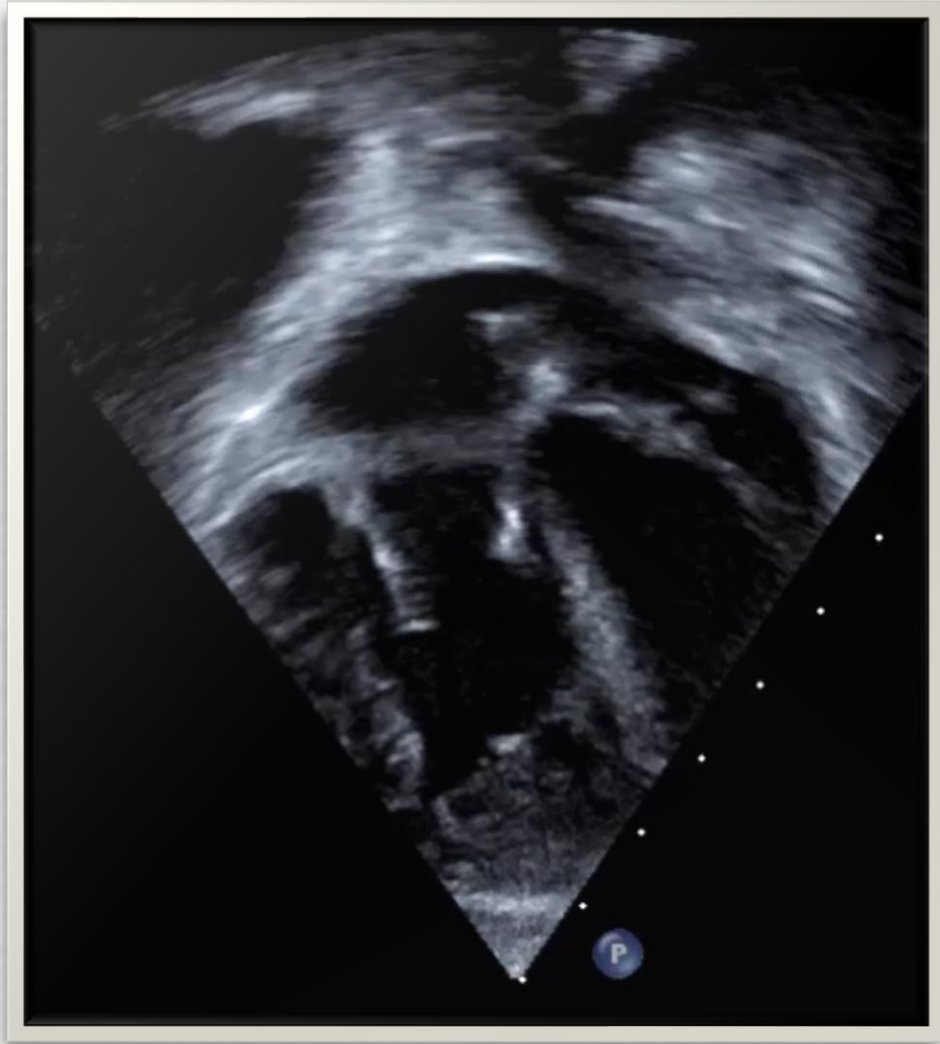
2. Atrio-Ventricular Connection



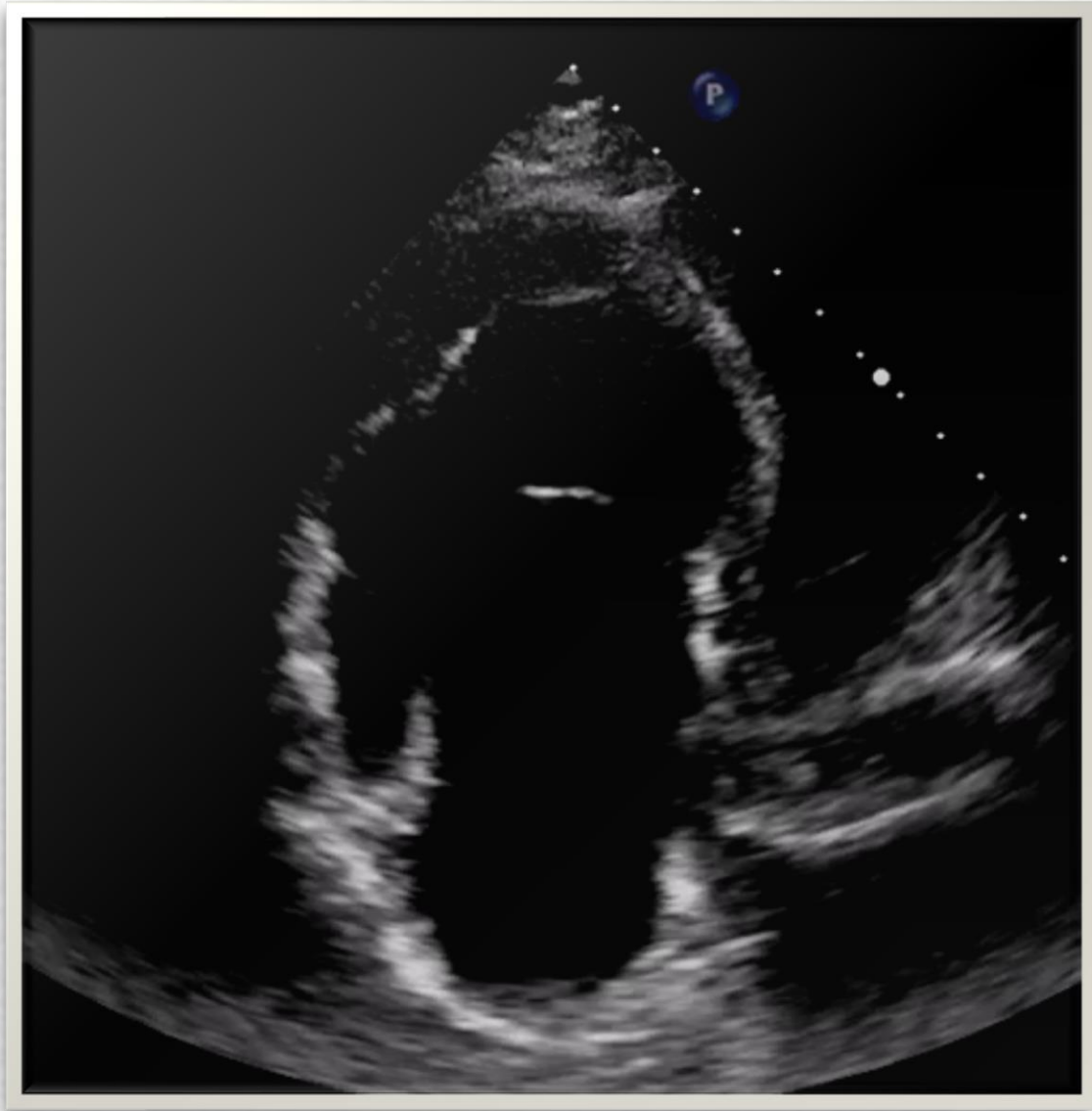
2. Atrio-Ventricular Connection



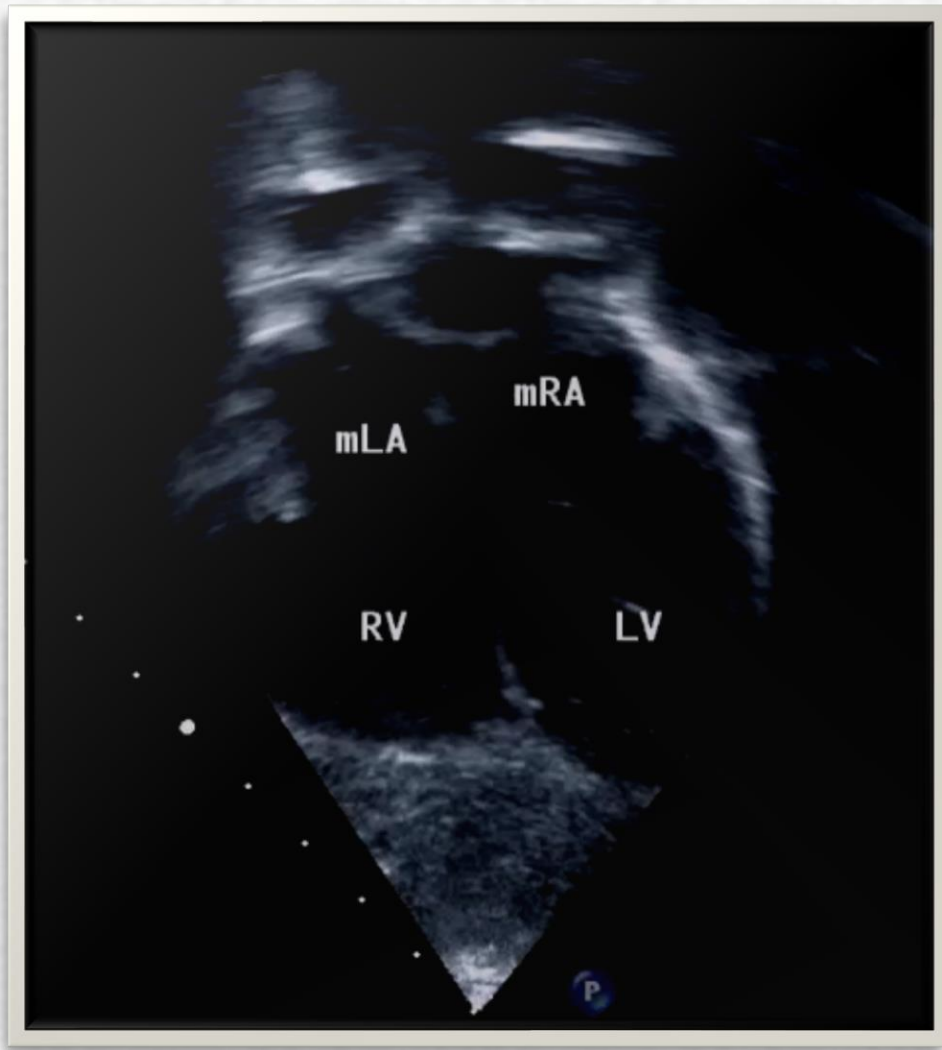
2. Atrio-Ventricular Connection



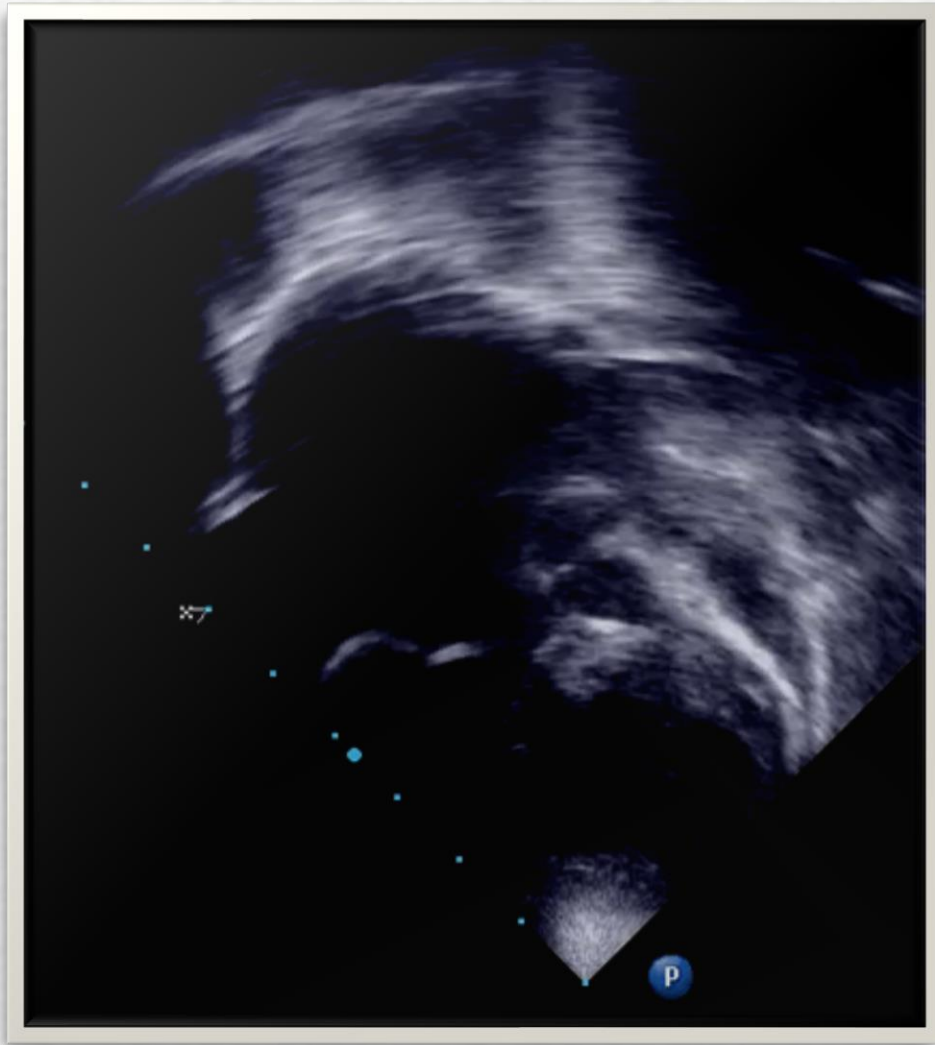
2. Atrio-Ventricular Connection



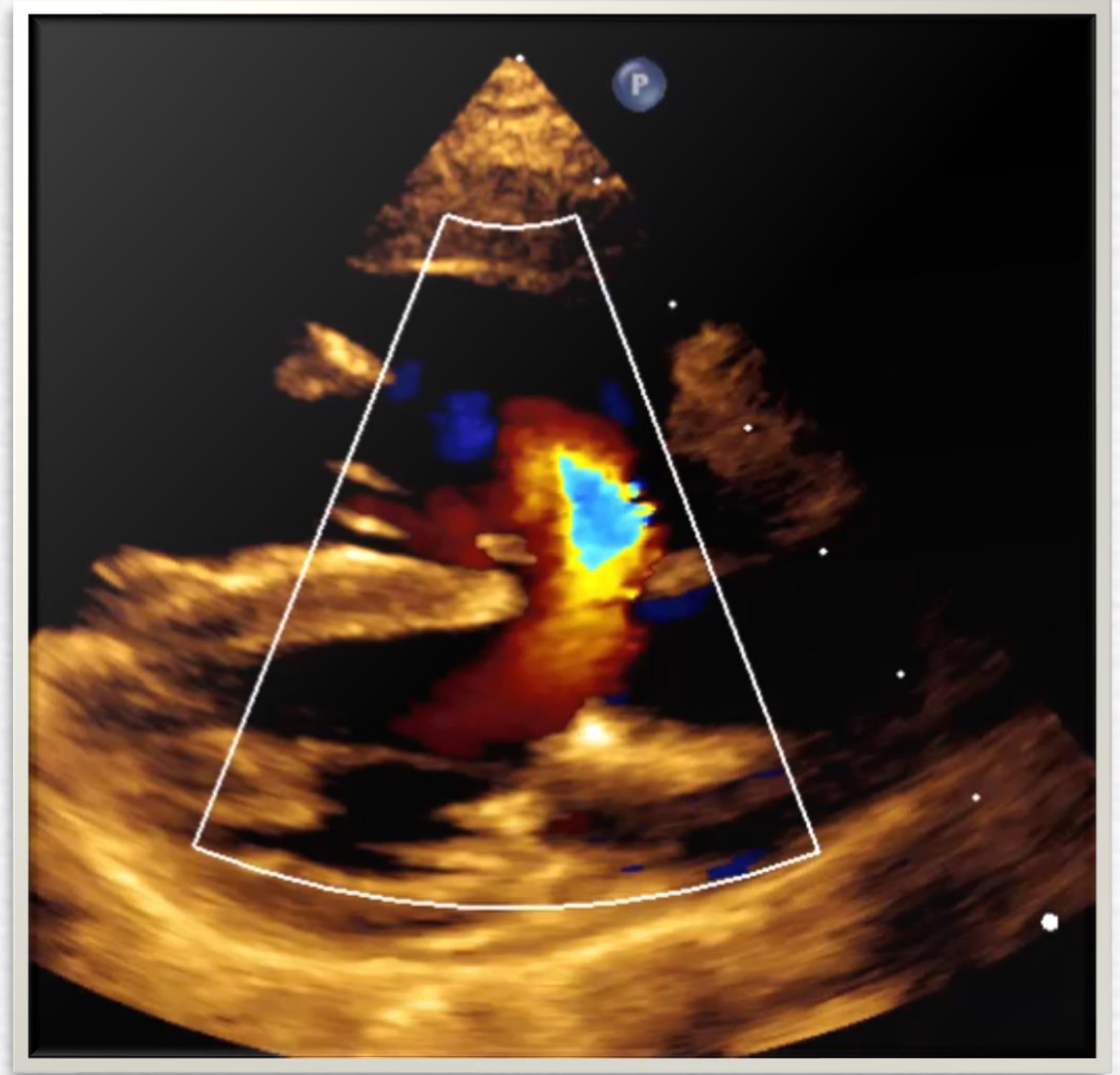
2. Atrio-Ventricular Connection



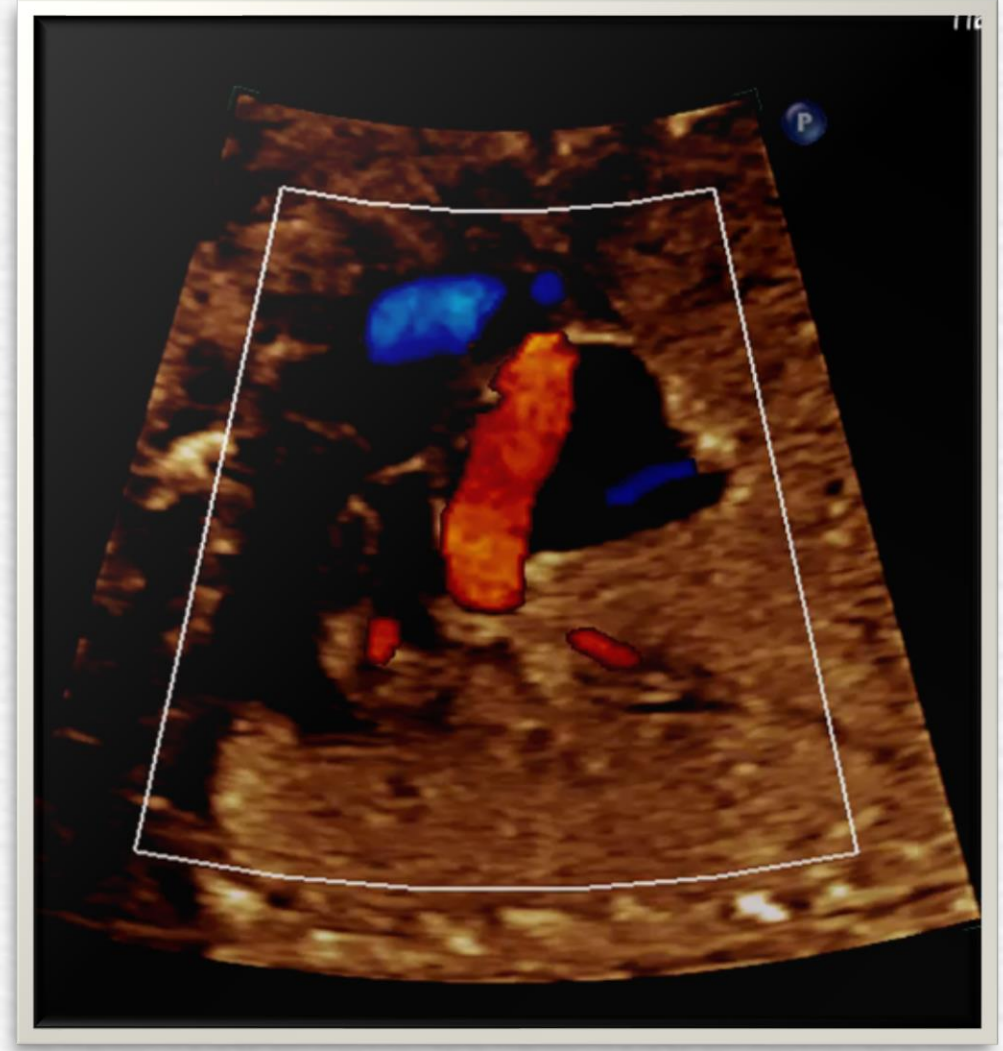
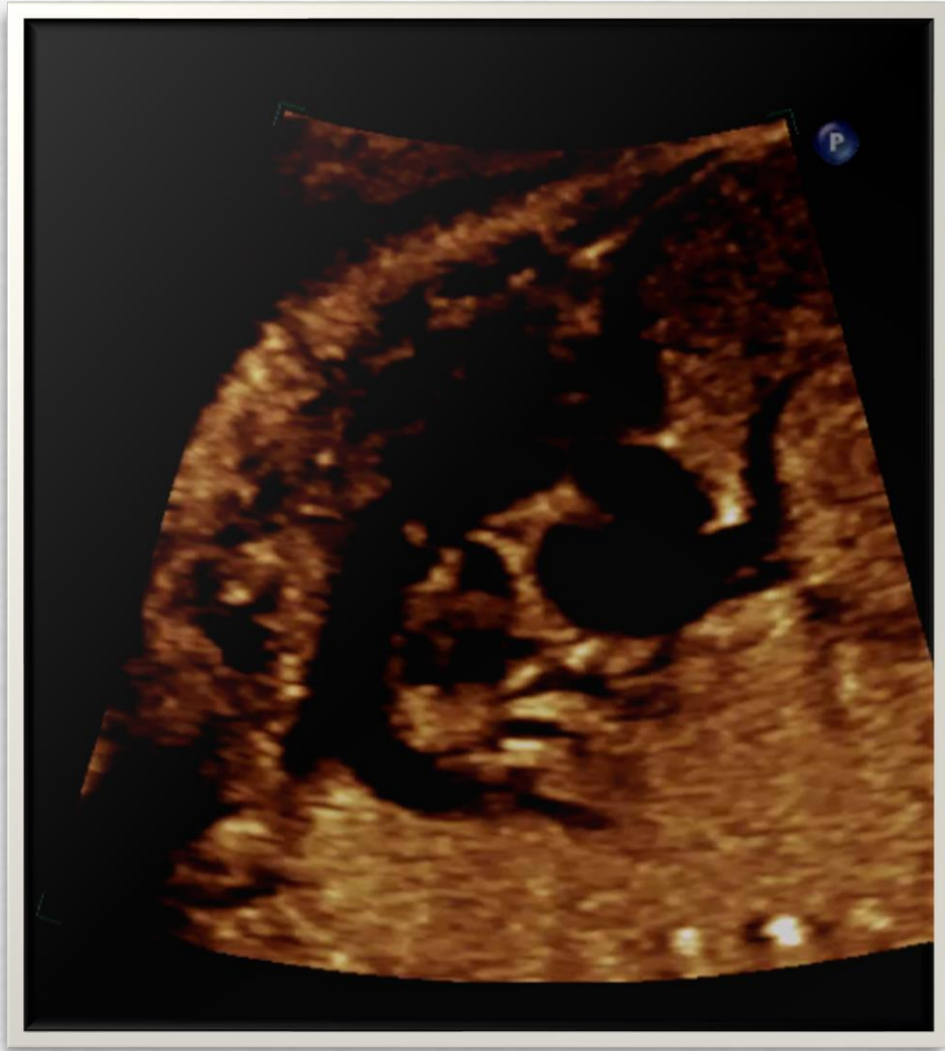
2. Atrio-Ventricular Connection



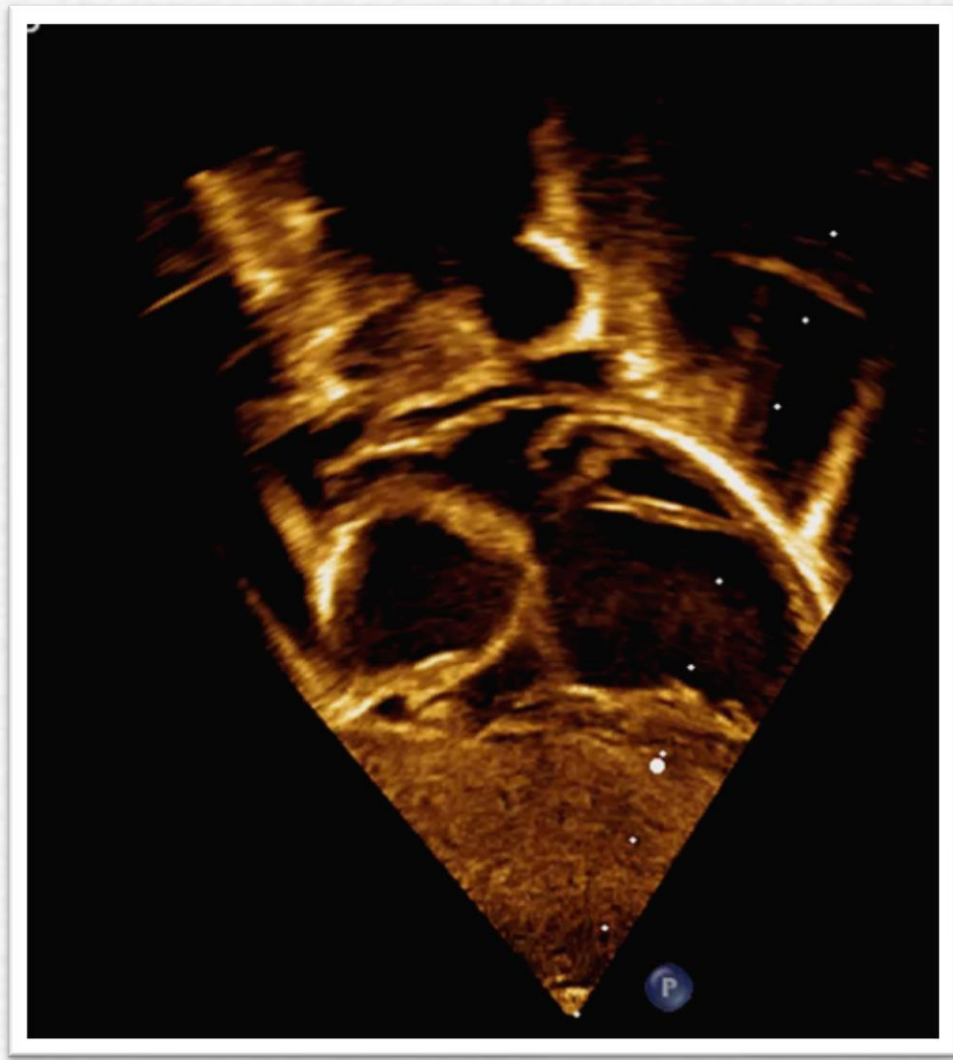
3.Ventriculo-Arterial Connection

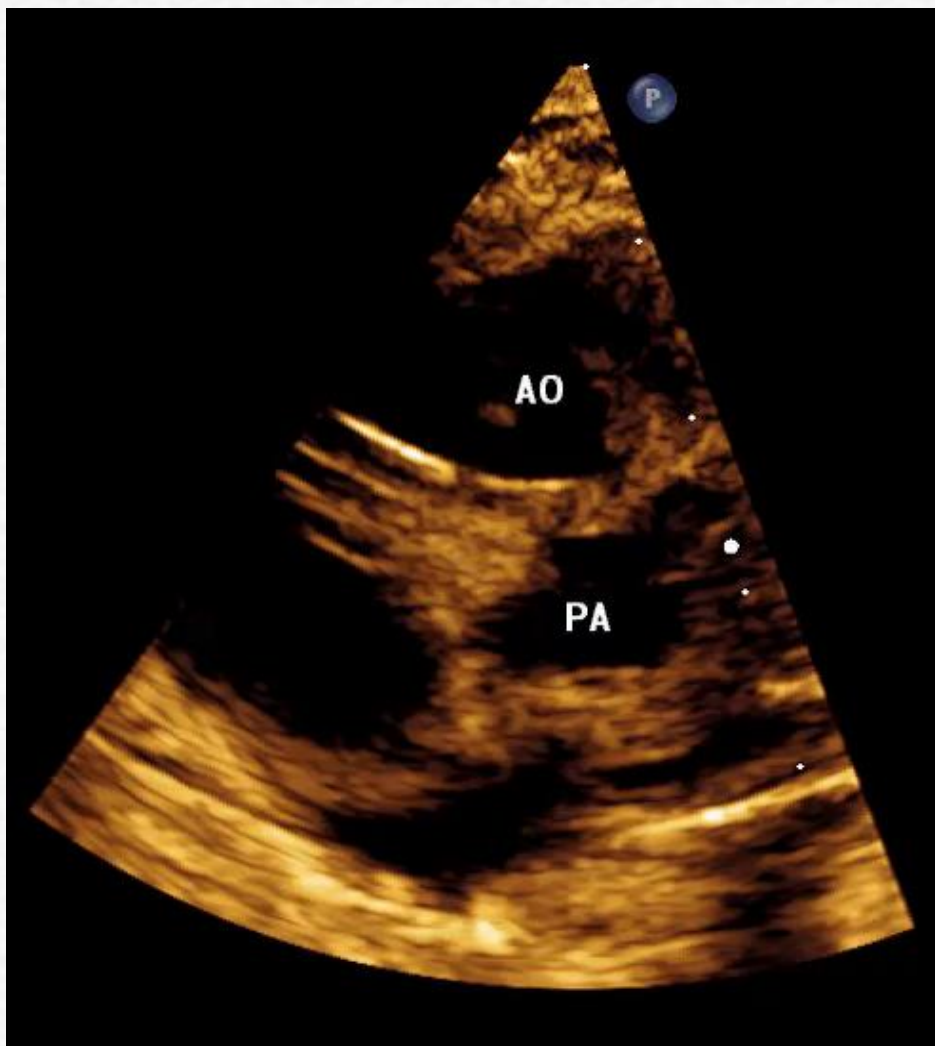


3.Ventriculo-Arterial Connection

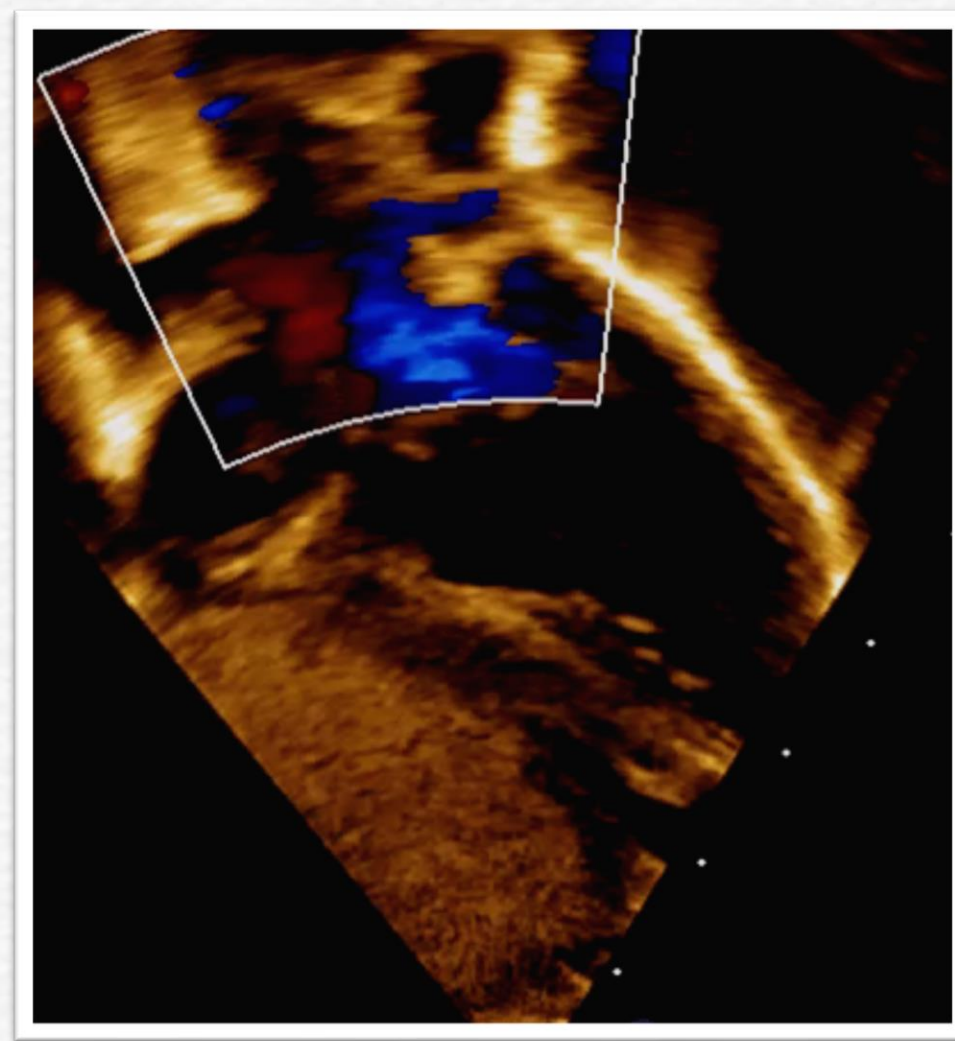


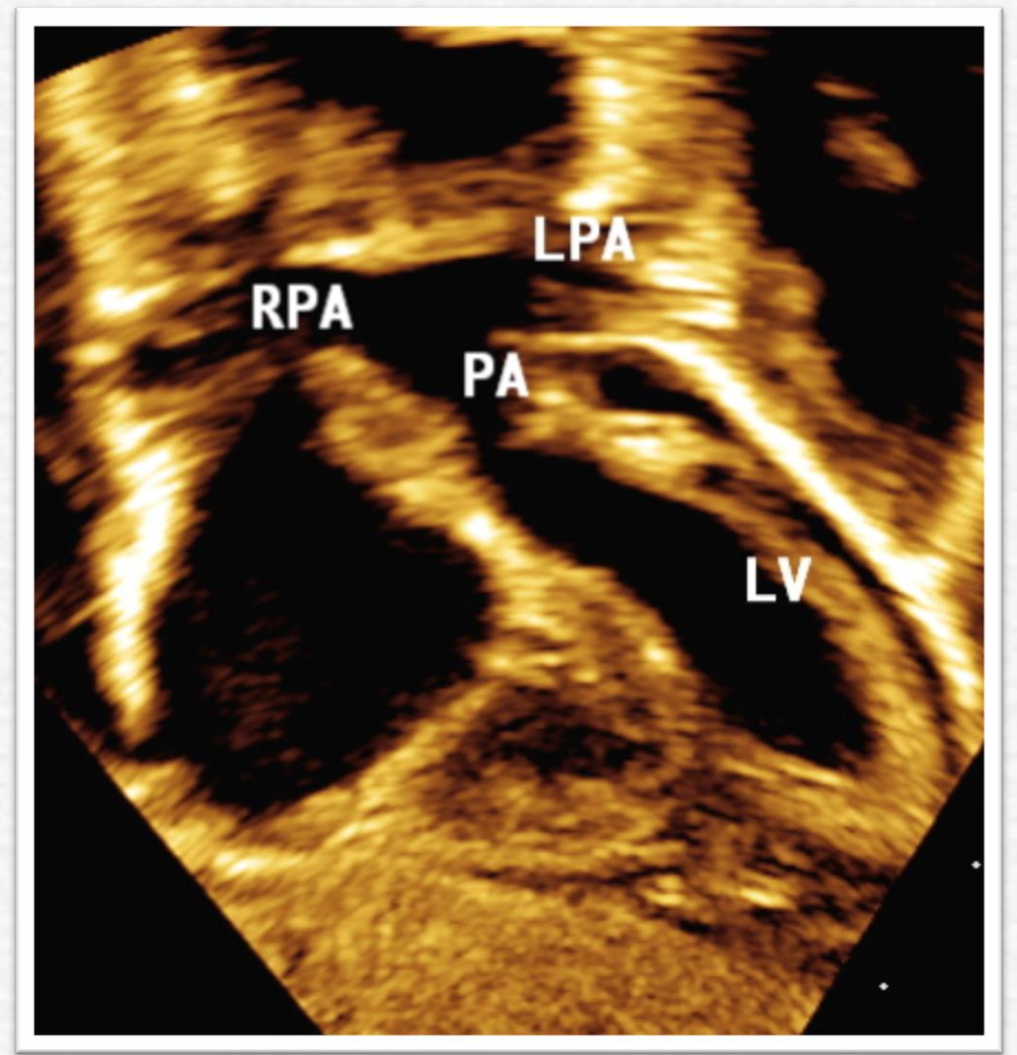
II. Sweeping to tell interesting stories

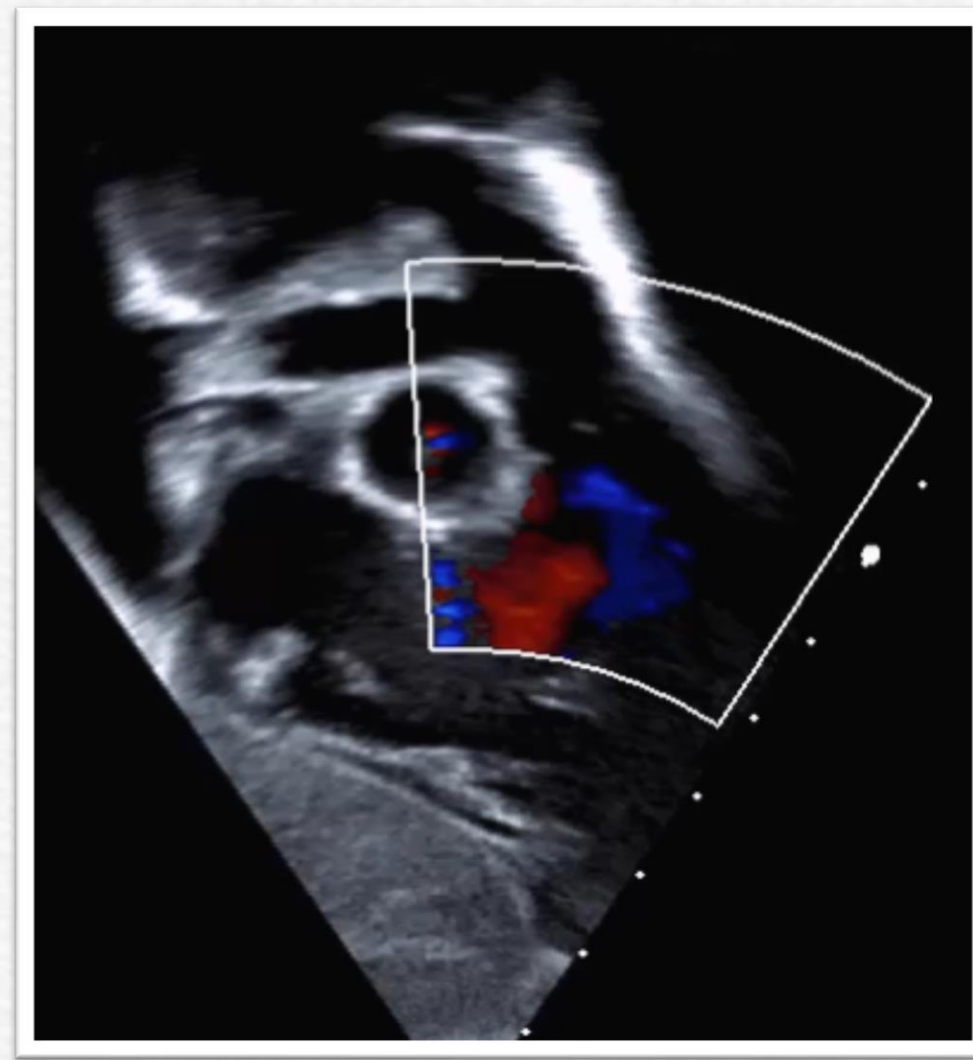
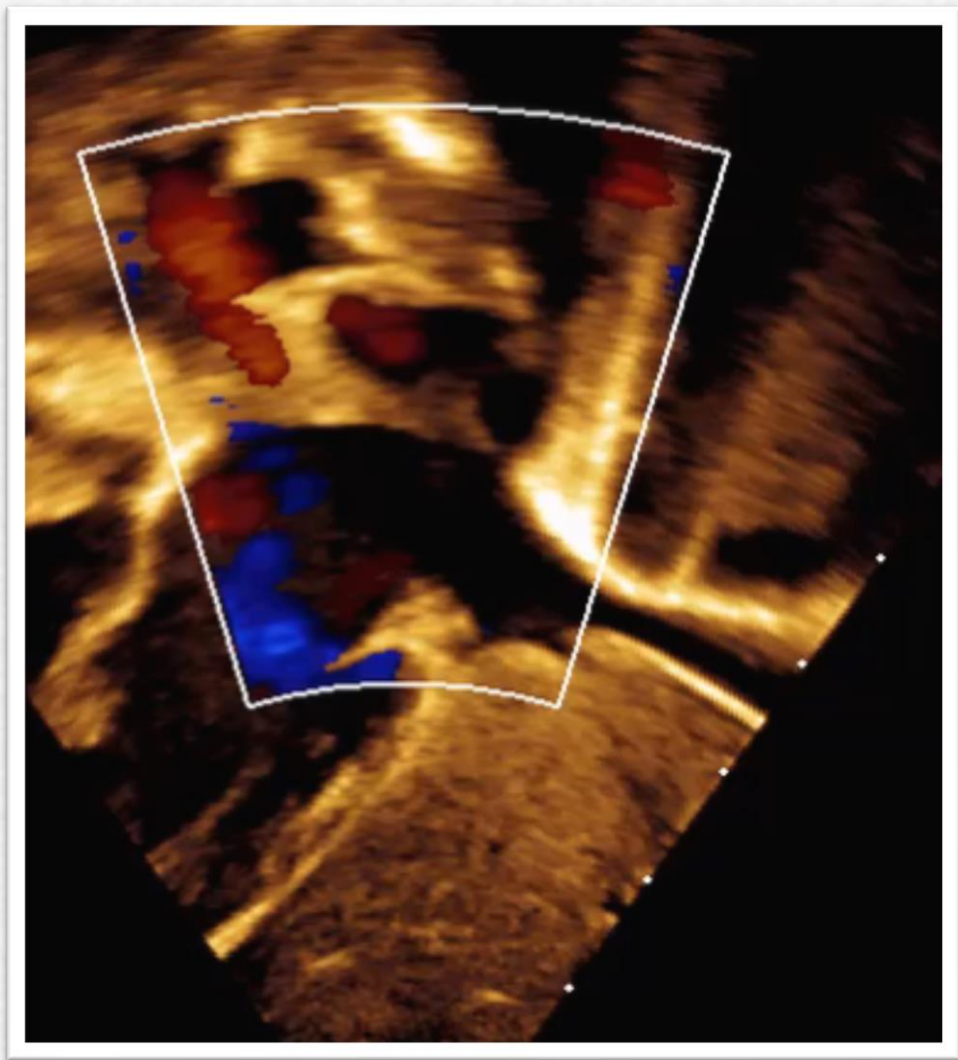


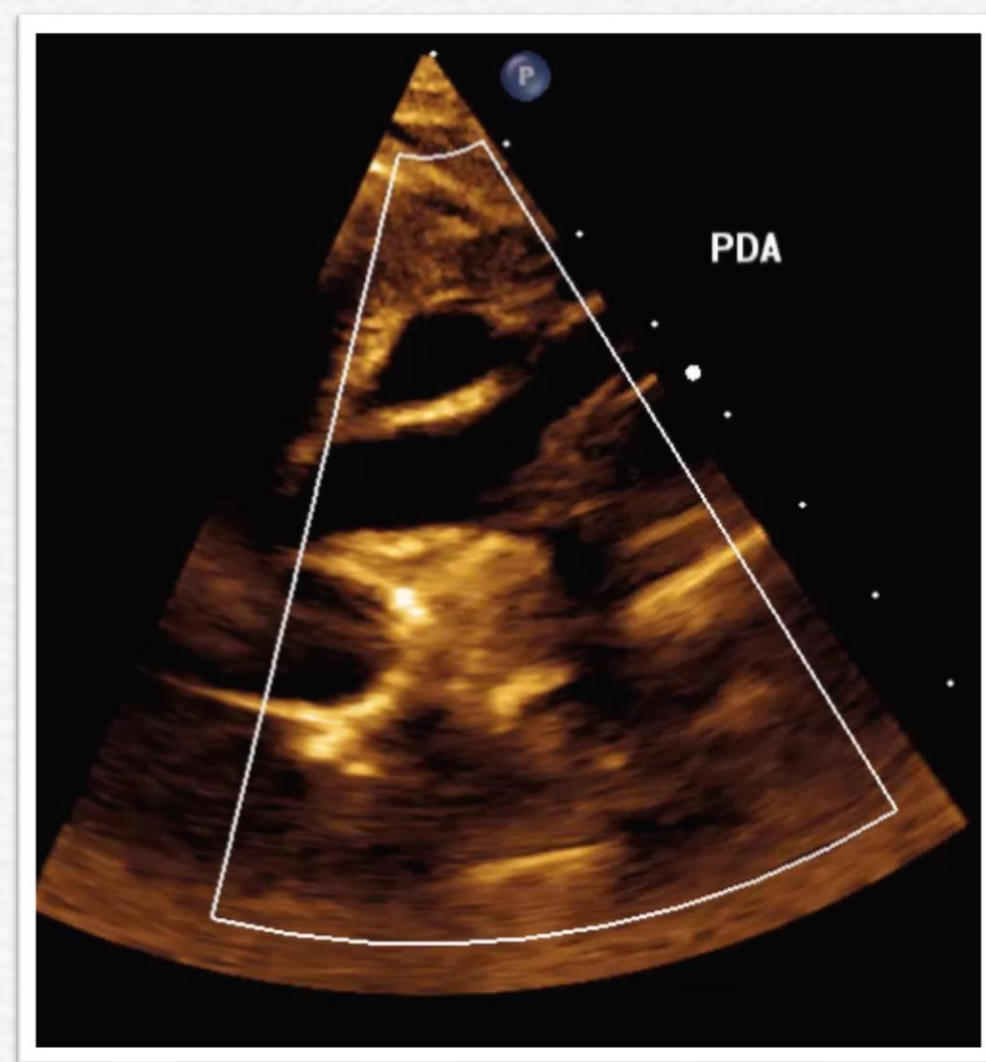
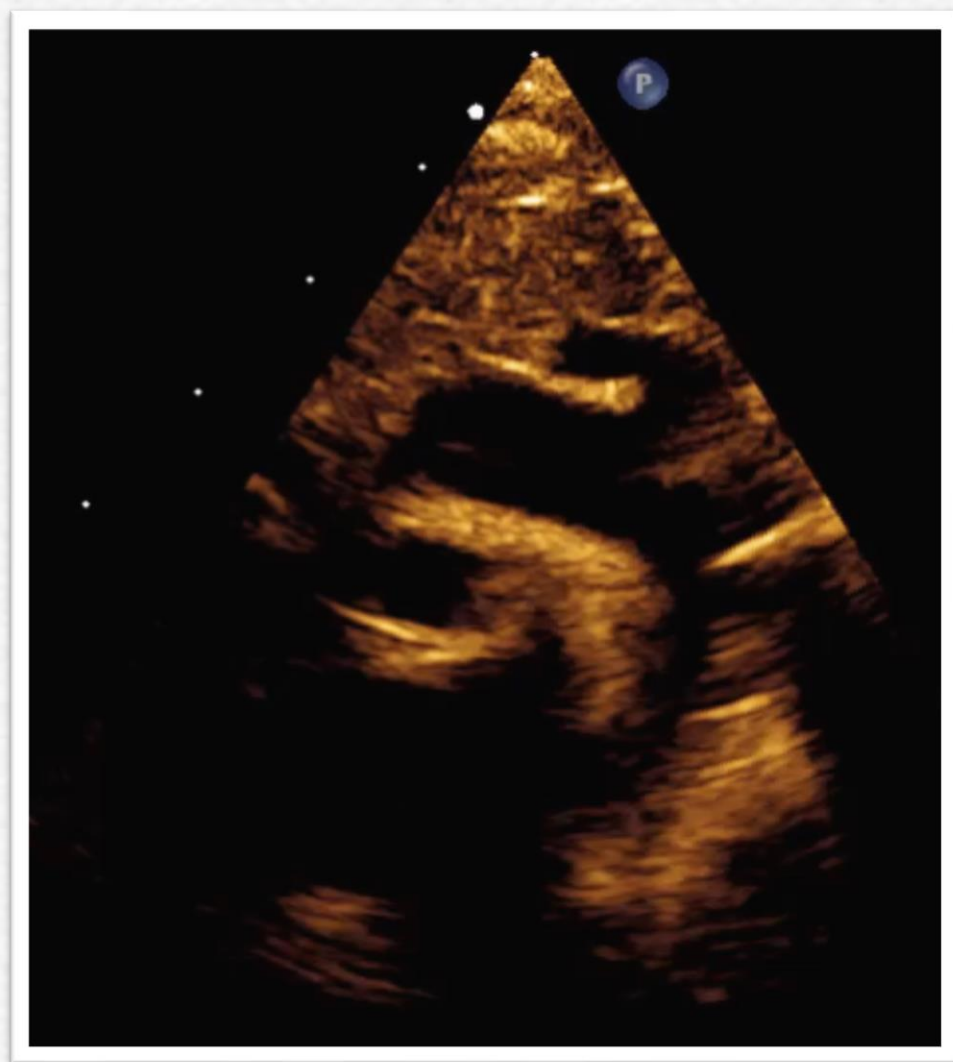


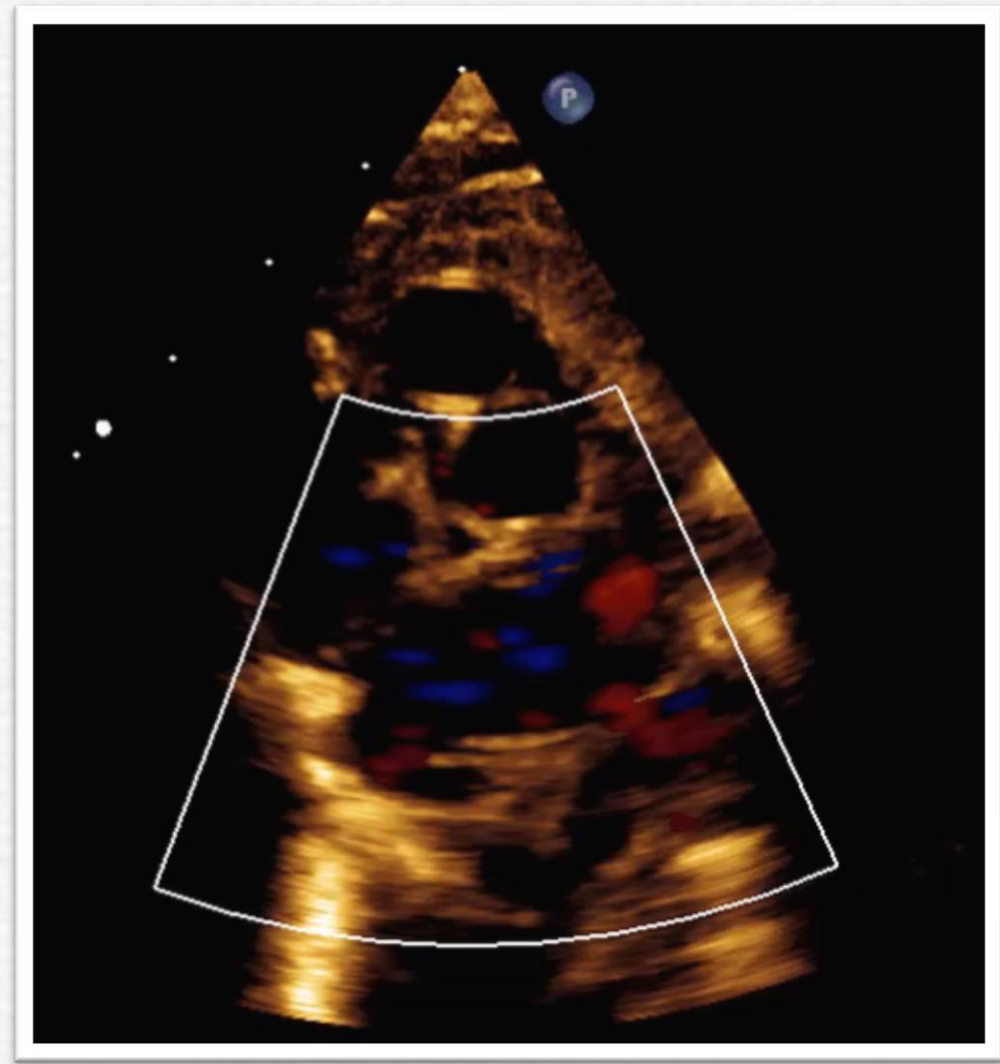
III. Use these two windows!

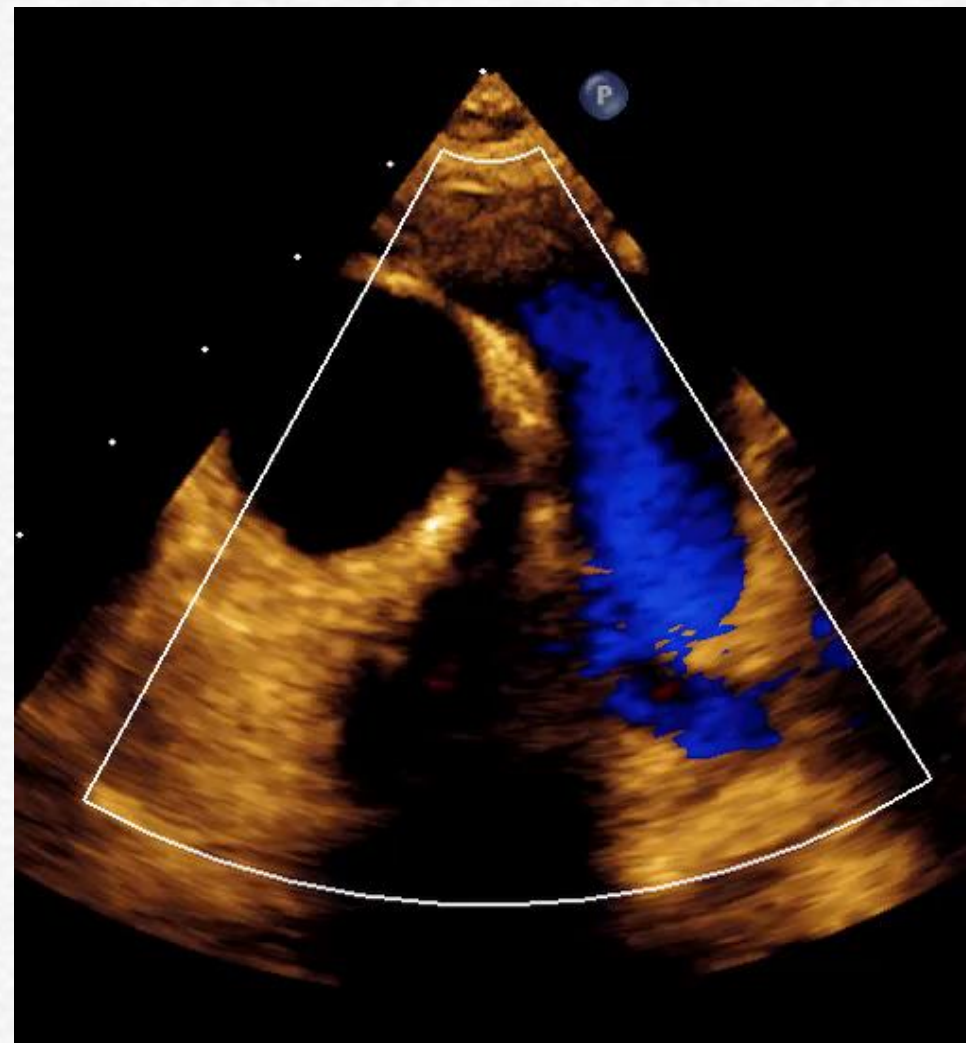
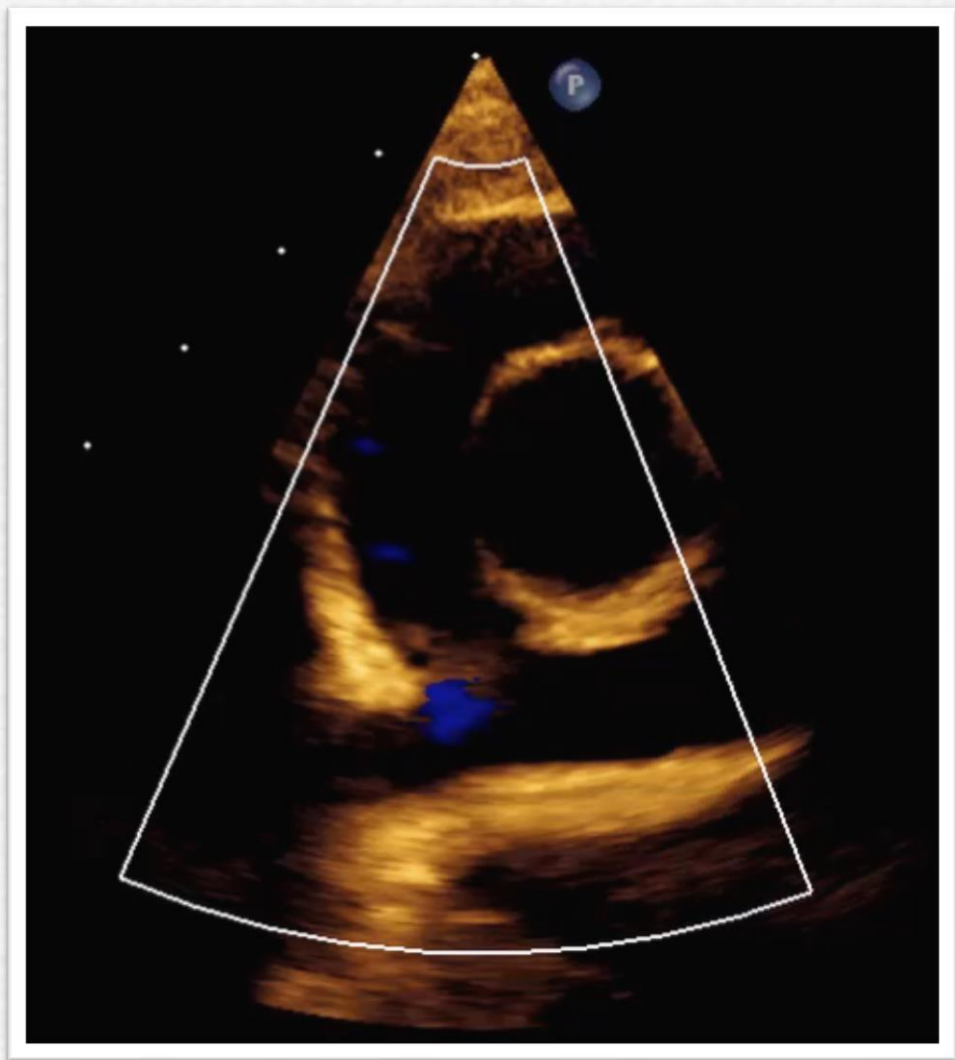


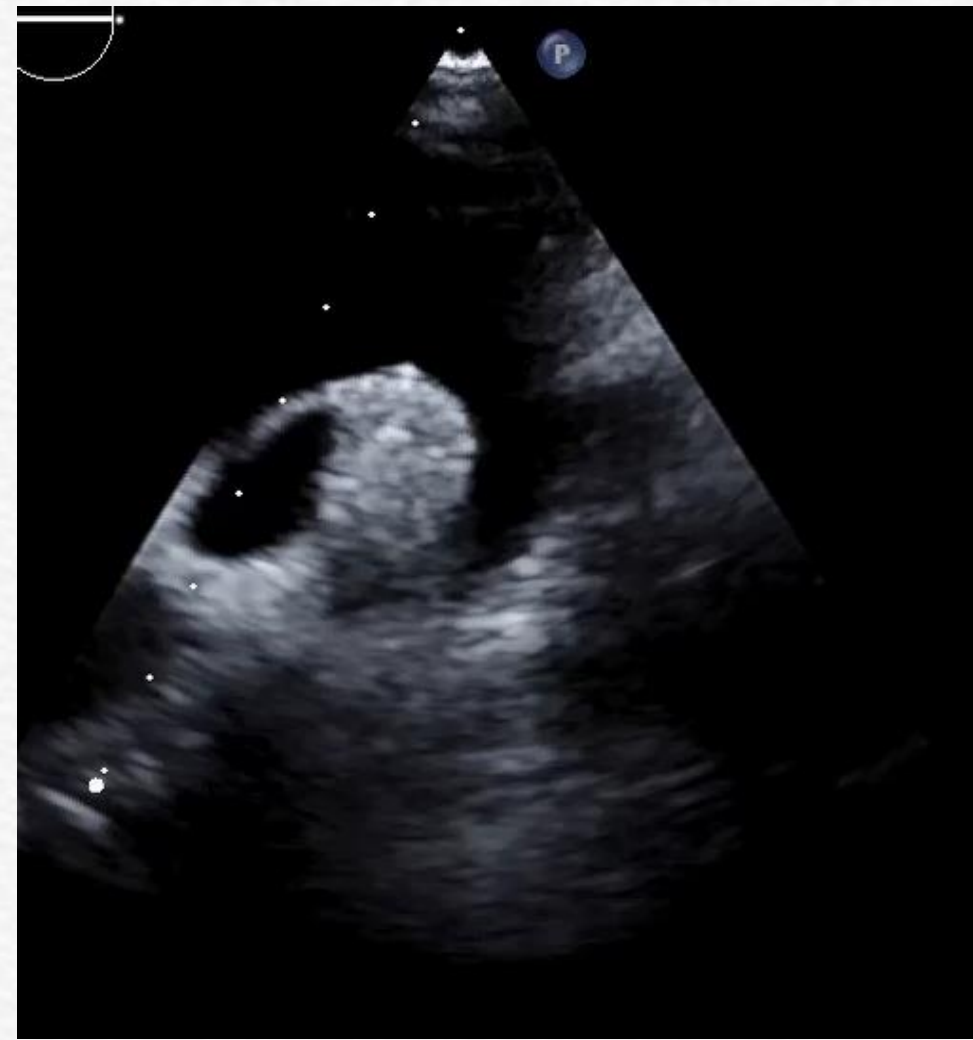












IV. Indexing and Z score

Be familiarized with Z-score

1. What is a Z-Score?

Simply put, a z-score is the number of **standard deviations** from the mean a data point is. But more technically it's a measure of how many standard deviations below or above the population **mean** a **raw score** is. A z-score is also known as a **standard score** and it can be placed on a **normal distribution** curve. Z-scores range from -3 standard deviations (which would fall to the far left of the normal distribution curve) up to +3 standard deviations (which would fall to the far right of the normal distribution curve). In order to use a z-score, you need to know the **mean** μ and also the population standard deviation σ .

| parameterz.blogspot.com

Parameter(z)

ECHO Z-SCORE CALCULATORS

Pediatric and Fetal Echo Z-Score Calculators

[Boston Z-Scores](#)

MENU

[Home](#)

[Aortic Root Z-Scores](#)

[Ascending Aorta Z-Scores](#)

[Halifax \(Heart, 2006\)](#)

[Paris \(AJC, 2010\)](#)

[Cardiac Valve Z-Scores](#)

[Common Atrial Z-Scores](#)

Thank you for your attention!